

Department of Physical Geography and Geoecology
Faculty of Science
University of Ostrava
IAG/AIG Carpatho-Balkan-Dinaric Regional Working Group,
Carpatho-Balkan Geomorphological Commission
and
Czech Association of Geomorphologists

are pleased to invite you to the international scientific

NEEN
Y

Carpatho-Balkan-Dinaric
Conference
ON GEOMORPHOLOGY
Ostravice, Czech Republic
17-20 October 2011

<http://konference.osu.cz/cbd/>

3rd ANNOUNCEMENT
with final programme

September 2011

Conference partners



UNIVERSITAS
OSTRAVIENSIS
Facultas Rerum Naturalium

ČAG

ČESKÁ
ASOCIACE
GEOMORFOLOGŮ



Background

The Council of the International Association of Geomorphologists (IAG/AIG) at its meeting held in the framework of the 6th International Conference on Geomorphology in September 2005 in Zaragoza, Spain, approved the Carpatho-Balkan-Dinaric Regional Working Group (CBDRWG) as one of new IAG/AIG WGs. The CBDRWG was proposed by geomorphologists of 11 countries associated in the Carpatho-Balkan Geomorphological Commission (CBGC).

The CBGC was founded in 1963 on the occasion of a joint symposium "Geomorphology of the Carpathians" held in Kraków and Bratislava. From the very beginning, its main objective was to provide a platform not only for the exchange of knowledge and experience concerning the Carpatho-Balkan mountain system and adjacent depressions, but also for the solving of common research tasks. Gradually, its members were Bulgaria, Czechoslovakia, Hungary, Poland, Romania, Soviet Union and Yugoslavia. After some inertia in 1990s there has been a visible endeavour recently to re-activate the cooperation within the CBGC.

The main objective of the Commission under new conditions is again the creation of a platform for effective cooperation of the original CBGC member countries (Bulgaria, Hungary, Poland, Romania), successor states formed following the disintegration of the original CBGC member countries (Czechia, Slovakia, Croatia, Serbia and Montenegro, Slovenia, and Ukraine), as well as of the states which had no chance to become the CBGC member country in the past for political reasons (Austria). To be able to continue in the cooperation with successor states of former Yugoslavia which are not lying in the Carpatho-Balkan mountain system after its division, the study area of the approved IAG/AIG WG was broadened with the Dinarides.

Organizing committee

Local Organizing Committee:

Assoc. Prof. Jan Hradecký, University of Ostrava (Czech Republic)

Prof. Jozef Minár, University of Ostrava (Czech Republic)

Assoc. Prof. Tomáš Pánek, University of Ostrava (Czech Republic)

MSc. Veronika Smolková, University of Ostrava (Czech Republic)

Dr. Karel Šilhán, University of Ostrava (Czech Republic)

International Honorary Committee:

Assoc. Prof. Milos Stankoviansky – Chair of the Carpatho-Balkan-Dinaric Regional Working Group (IAG)

Prof. Dénes Lóczy – President of the Carpatho-Balkan Geomorphological Commission

Austria: Prof. Christine Embleton-Hamann

Bulgaria: Dr. Mariyana Nikolova

Croatia: Prof. Andrija Bognar

Czechia: Dr. Karel Kirchner

Hungary: Dr. Janos Kovacs

Macedonia: Dr. Ivica Milewski

Poland: Dr. hab. Zofia Raczkowska

Romania: Prof. Dan Balteanu

Serbia: Dr. Jelena Calic

Slovakia: Dr. Jan Lacika

Slovenia: Assoc. Prof. Karel Natek

Ukraine: Dr. Andriy Mykhnovych

FINAL PROGRAMME* OF CARPATHO-BALKAN-DINARIC CONFERENCE ON GEOMORPHOLOGY

OSTRAVICE, CZECH REPUBLIC, 17-20 OCTOBER, 2011

17 OCTOBER 2011 - Monday

09:00 - 14:00 Opening of the conference desk (will be open during the whole conference)

14:00 – 14:45 Opening Ceremony

Jan Hradecký – President of the Czech Association of Geomorphologists, Head of the Department of Physical Geography and Geoecology, University of Ostrava
Roman Maršálek – Vice-Dean of the Faculty of Science, University of Ostrava
Miloš Stankovianský – Chair of the Carpatho-Balkan-Dinaric Regional Working Group (IAG)

Dénes Lóczy – President of the Carpatho-Balkan Geomorphological Commission
Adam Kotarba – Information about the Studia Geomorphologica Carpatho-Balkanica
Information about IAG/AIG/CBDRWG Grants for Young Geomorphologist

Keynote lectures

14:45 – 15:15

Leszek Starkel

Roots of Carpathian landscapes (morfotectonics, climatic changes, human activity)

15:15 - 15:45

Ireneusz Malik

Dendrogeomorphology – tool for precise reconstruction of geomorphic activity

Discussion

16:00 - 16:30

Pavel Mentlík, Jozef Minár, Zbyněk Engel, Regis Braucher

Glaciation of Malá and Velká Studená Valleys (the High Tatra Mts., Slovak Republik)

16:30 – 17:00

Petr Tábořík

Electrical resistivity tomography in geomorphic research of the Western Carpathians

* The Organizing Committee reserves the right to change the programme in case of the absence of speakers.

Discussion

17:15 - 18:30 Plenary Session of the Carpatho-Balkan Geomorphological Commission

18:45 Welcome drink

19:00 Dinner

OCTOBER 18, 2011 - Tuesday

8:30 – 9:10

Ian S. Evans

Glaciers around Mt. Everest: the hanging or debris-covered glaciers of Khumbu

Discussion

Session 1 – Glacial and periglacial geomorphology

Chairs: Ian S. Evans & Pavel Mentlík

9:15 – 9:30

Marek Křížek, Peter Mida, Lenka Křížová

Morphology of cirques and grain micromorphology of moraines in the High Tatras, Slovakia/Poland

9:30 – 9:45

Leszek Starkel

Glacial-interglacial cycle in the formation of slopes and valleys floors in the Flysch Carpathians

9:45 – 10:00

Alfred Vespremeanu-Stroe, Razvan Popescu, Petru Urdea, Mirela Vasile

The assessment of permafrost occurrence in Southern Carpathians

10:00 – 10:15

Alfred Vespremeanu-Stroe, Mirela Vasile

Altitudinal development of seasonal frost processes and the influence of exposure on freeze-thaw frequency and frost weathering

10:15 – 10:45

Coffee break

Session 2 – GIT & Geomorphology

Chairs: Joanna Zawiejska & Veronika Smolková

10:45 – 11:00

Ionut Sandric, Zenaida Chitu, Bogdan Mihai, Ionut Savulescu
Spatio-temporal modeling of landslide hazard using Landsat time series imagery (1980-2011) and uncertainty propagation

11:00 – 11:15

Jakub Šilhavý
Perspective of Geomorphologic information system extension: Module of automated morpholineament extraction

11:15 – 11:30

Milan Frandofer, Milan Lehotský
Assessment of Channel Pattern Evolution Using Historical Maps and Data of Remote Sensing. Case Study of River Topľa

11:30 – 11:45

Marcel Torok-Oance, Florina Ardelean, Onaca Alexandru
Object-oriented image analysis for geomorphological mapping of the karst landforms. An exploratory case study: The Mehedinți Mountains (Southern Carpathians, Romania)

12:00 – 13:30 Lunch

Session 3 – Fluvial geomorphology

Chairs: Leszek Starkel & Mihai Micu

13:30 – 13:45

Igor Matečný, Monika Michalková, Milan Lehotský
Morphological Typology of Danube River System near Gabčíkovo

13:45 – 14:00

Anna Kidova
Evolution of braided river channel (The Bela River case study)

14:00 – 14:15

Nicol Kolářová, Zdeněk Máčka, Lukáš Krejčí
Controls on longitudinal variability of large woody debris in submontane river - an example from the Moravka River, Czech Republic

14:15 – 14:30

Tomáš Galia, Jan Hradecký

Patterns of channel units and bedload transport in Beskydian headwater streams

14:30 – 14:45

Ján Novotný, Milan Lehotský, Jacek Szmańda, Piotr Gierszewski, Jaroslaw Kordowski, Ján Sládek

Contemporary development of the by-passed river floodplain (the Danube River example)

14:45 – 15:00

Joanna Zawiejska, Bartłomiej Wyżga, Artur Radecki-Pawlik, Antoni Amirowicz

A method for the assessment of hydromorphological river quality and its application to the Czarny Dunajec River, Polish Carpathians

15:00 – 15:15

Bartłomiej Wyżga, Joanna Zawiejska, Artur Radecki-Pawlik

Reference hydromorphological conditions, environmental change, and the restoration of Polish Carpathian rivers

15:15 – 15:45 Coffee break

Session 4 – Anthropogenic geomorphology (HILS Session)

Chairs: Miloš Stankovianský & Dénes Lóczy

15:45 – 16:00

Dénes Lóczy, Péter Gyeizse

Human impact and inundation hazard on the floodplain of a small river (Kapos River, SW-Hungary)

16:00 – 16:15

Péter Rózsa, Tibor Novák

Anthropogeomorphological Landscape Transformation of the Tokaj Nagy-Hill - a case study for quantifying the process

16:15 – 16:30

Adam Lajczak

Deltas in man-made reservoirs in Polish Carpathians - functioning, structure and morphology

16:30 – 16:45

Traian Demeter, Bogdan Mihai, Ionut Savulescu

Morphological changes and land management issues in selected sectors of the Danube River Floodplain in Romania. A combined analysis.

Session 5 – Karst Geomorphology

Chairs: Karel Natek & Jaromír Demek

16:45 – 17:00

Alena Petřvalská

Relationship between caves and their relief in the Slovak Karst

17:00 – 17:15

Zdenko Hochmuth

The cave palaeolevels of the Skalistý potok Brook (the Slovak Karst)

17:15 – 17:30

Neven Bočić, Mladen Pahernik

Specificities of the geomorphological mapping of the karst plateau in the Dinaric karst area (example from Croatia)

17:30 – 17:45

Michal Gallay, Dušan Barabas, Peter Bandura

Analysing the pattern of superficial flow in the eastern part of the Slovak Karst region

17:45 – 18:45 **Poster session I**

Neven Bočić

Karst caves – a part of geoheritage of Croatia

Witold Bochenek

The diversity of overland flow and soil wash on experimental plots

Ionut Cristea, Marcel Mindrescu

River channel sensitivity in the Carpathian Curvature in the light of cartographic materials. Case study: Putna River

Michal Gallay

Mapping current slope failures on the western slope of the Heringeš massive in Košice

Hanna Hajdukiewicz, Joanna Zawiejska, Bartłomiej Wyżga, Artur Radecki-Pawlik

Longitudinal and temporal variation of bed-material grain size in an impacted mountain river, the Czarny Dunajec, Polish Carpathians

Karel Kirchner, Lucie Kubalíková

Environmental geomorphology and possibilities of evaluation of geomorphological sites in the eastern part of Moravian-Slovakian Carpathians (Czech Republic)

Ioana Persoiu, Aurel Persoiu, Maria Radoane

Climatic and geomorphologic controls on the human occupation of Someșu Mic floodplain (Romania) during the Holocene

Artur Radecki-Pawlik, Bartłomiej Wyżga, Hanna Hajdukiewicz, Joanna Zawiejska

Environmental effects of gravel mining in the Polish Carpathian rivers

Karel Šilhán, Tomáš Pánek, Jan Hradecký

Three centuries of slope instabilities within the Taraktash slope deformation reconstructed from tree-ring data (Crimean Mountains, Ukraine)

Veronika Staškovanová

Morphostructural research of the Tribeč Mts.

19:00 + Festive Dinner

19 OCTOBER 2011 - Wednesday

9:00 – 9:30

Magdy Torab, Noura Dalal, Nourhan Nour

Boulder fields as indicator of recent storms or paleotsunami along Alam El Rom on the NW coast of Egypt

Discussion

Session 6 – Natural hazards

Chairs: Magdy Torab & Marcel Mindrescu

9:30 – 9:45

Anita Pande

Dynamics of Slope Instability and Its Impact on Cultural Landscape: A Case Study from Central Himalaya, India

9:45 – 10:00

Florina Grecu, Cristina Ghită, Robert Dobre

Factors and criteria used to the environmental and natural vulnerability map design (Romanian plain)

10:00 – 10:15

Miloš Stankoviánsky, Milan Frandofer
Natural hazards in the Upper Myjava Basin

10:15 – 10:30

Alexandru Onaca, Mircea Voiculescu
Snow avalanche assessment from Bucegi ski area using dendrochronology

10:30 – 10:45

Dan Balteanu, Mihai Micu, Viorel Chendes, Dana Micu, Mihaela Sima, Carmen Dragota
Multi-hazard analysis in Vrancea Seismic Region: complexity and uncertainties within a qualitative - semi-quantitative approach

10:45 – 11:15 Coffee break

Session 7 – Slope processes I

Chairs: Jozef Minár & Bogdan Mihai

11:15 – 11:30

Juraj Ondrčka, Libor Burian
Preliminary results of study of assessment of muddy floods in the Nitra and Myjava Hill Lands

11:30 – 11:45

Pavol Papčo
Evolution of large gullies: research methods and approaches

11:45 – 12:00

Małgorzata Wistuba, Ireneusz Malik
Eccentricity index of tree rings – a tool for identification of contemporary landsliding (Moravskoslezské Beskydy, Western Carpathians and Sudetes)

12:00 – 12:15

Tomáš Pánek, Jan Hradecký, Veronika Smolková
Evolution of mountainous floodplain in the light of landslide chronology reconstruction (Smrdutá Landslide, Outer Western Carpathians, Czech Republic)

12:15 – 13:45 Lunch

Session 8 – Slope processes II

Chairs: Ireneusz Malik & Zofia Rączkowska

13:45 – 14:00

Lenart Jan, Pánek Tomáš, Tábořík Petr

Geoelectric survey of Cyrilka cave site (Moravian-Silesian Beskydy Mts., Czech Republic): electromagnetic methods (2+3D ERT, GPR) and direct inside-cave mapping comparison

14:00 – 14:15

Marcel Mindrescu, Ionut Cristea

Rock mass failures and antisllope scarps in the Northern Romanian Carpathians

14:15 – 14:30

Tomáš Pánek, Rudolf Brázdil, Jan Klimeš, Veronika Smolková, Jan Hradecký, Pavel Zahradníček

Rainfall-induced landslide event of May 2010 in the eastern part of the Czech Republic

14:30 – 14:45

Petr Tábořík, Václav Škarpich, Veronika Komárková, Jana Mičulková

Complex slope deformation in the Klubinská dolina valley (Veľká Rača massif, Kysucké Beskydy Mts, NW Slovakia)

14:45 – 15:00

Bogdan Gądek, Mariusz Grabiec, Stanisław Kędzia, Zofia Rączkowska

Morphodynamic and structure of debris slopes in the Tatras

15:00 – 15:30 Coffee break

Session 9 – Structural geomorphology and Cainozoic development of relief

Chairs: Florina Grecu & Marta Jurchescu

15:30 – 15:45

Jaromír Demek, Peter Mackovčín, Petr Slavík

Pliocene Erosion Megaphase in Moravian-Silesian Carpathians

15:45 – 16:00

Karel Natek

Pre-Quaternary planation surfaces in the Dinaric Mountains in the lights of modern geomorphological research methods

16:00 – 16:15

Jozef Minár, Miroslav Bielik, Michal Kováč, Ján Sládek, Miloš Stankoviánsky
*New results of integrated research of the Western Carpathians
morphostructure*

16:15 – 16:30

Jaromír Demek, Peter Mackovčín, Petr Slavík
Rock Pediments and Bahada in the Podbeskydská pahorkatina Hillyland

16:30 – 16:45

Anna Dobos
*Reconstruction of Pleistocene and Holocene landscape development with
analysing of sediments*

16:45 – 17:00

Veronika Smolková, Tomáš Pánek, Jan Hradecký
*Quantification of the denudation rates derived from the silted landslide-
dammed lakes in the Outer Western Carpathians*

17:00 – 17:15

Ivica Milevski
Morphometric classification of high mountains in the Republic of Macedonia

17:15 – 18:15 **Poster session II**

Hasmik Balyan

*Main factors of the stream formativ in the peripheral rimes of small
Caucassus and volcanic rimes /for example of the Republic of Armenia/*

Sandu Boengiu, Ionus Oana, Daniel Simulescu

*River undercutting and induced landslide hazard. The Jiu valley (Romania) as
case study*

Anna Bucala, Anna Budek

*The role of rainfalls and floods in transformation of small catchment reliéf, the
Suszanka stream, the Beskyd Średni Mts., Poland*

Anna Dobos

*Pleistocene and holocene landscape development and geoheritage of the
Hegyes-Kö hill in Demjén*

Kamel Hachemi, Florina Grecu, Andre Ozer, Marta Jurchescu, Mircea Visan

*Detection of small deformations near the town of Saranga (Buzau) by
differential interferometry (DInSAR)*

Marta Jurchescu, Roxana Cuculici

Assessment of geomorphological change due to human impact in two lignite mining areas (Getic Piedmont and Getic Subcarpathians, Romania)

Juraj Kapusta, Martin Boltžiar, Miloš Stankoviansky

Changes in geomorphic effectiveness of debris flows in the High Tatra Mts within the last six decades (on the examples of the Kačacia dolina Valley, Velická dolina Valley and the Dolina Zeleného plesa Valley)

Marek Křížek, Blanka Plechačová

Regelation cycles of the patterned ground in the High Tatras

Alena Petřvalská

Comparison of dolines in the Jasovská and Zádielska plateaus (Slovak karst)

Marián Šabo

Morphological-morphometrical typification of the Western Carpathians

18:15 – 18:45 Closing Ceremony

20 OCTOBER 2011 - Thursday

08:00 – 17:00 - 18:00

Field excursion

Landforms and recent geomorphic processes of the Moravian-Silesian Beskydy Mts

Lunch and refreshment during the field excursion are covered by the registration fee.

**THE EXCURSION IS HELD IN ANY WEATHER CONDITIONS!
THERE IS A RELATIVELY HIGH PROBABILITY OF RAIN AND TEMPERATURES
BELOW 10°C.**

**PLEASE, TAKE THIS FACT INTO CONSIDERATION.
GOOD BOOTS, WARM CLOTHES AND UMBRELLAS ARE RECOMMENDED.**

**THE ARRIVAL TO THE CONFERENCE VENUE IS PLANNED TO BE BETWEEN
17:00 AND 18:00.**



Oral sessions

The allocated time for oral presentations is 15 minutes in total. This includes the time for the presenter to be introduced, the presentation itself and question time. Therefore, the very presentation should be no longer than 12 minutes. The presenters will have access to a PC-compatible (no Mac) laptop with an LCD projector. Please, bring your PowerPoint presentation to the meeting on a flash drive or CD in order to load it into the in-room laptops. You will not be able to use your own laptop for your presentation. You can load your presentation to one of the conference laptops before the first session, or during the breaks preceding your presentation. There will be a support staff member in each room to help you.

Poster sessions

Each poster will be allocated space of 1.0 x 1.2 m. The preferred poster format is with the height larger than the width. It is advisable to hang the posters sometime before the poster session on the day of the respective session, if possible. The posters will have to be removed by the end of the day of each session. The presenters are kindly requested to be standing next to their posters in the Poster Room until the end of each Poster Sessions (see the Final Programme for the exact timing).

Further information

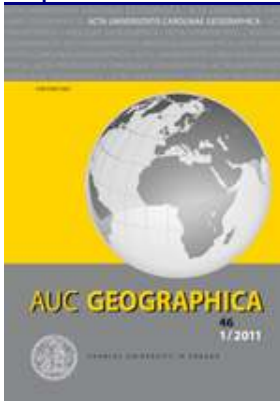
All the venue rooms shall be equipped with a computer (Microsoft Office 2010 PowerPoint) and a computer-connected data projector. English will be the official language of the Conference. Simultaneous translation services will not be available.

Publication offer

The Organizing Committee offers to publish papers presented at the Carpatho-Balkan-Dinaric Conference on Geomorphology in journals listed bellow. All manuscripts have to be sent to respective editorial boards. All manuscripts will be reviewed under the procedure of these journals.

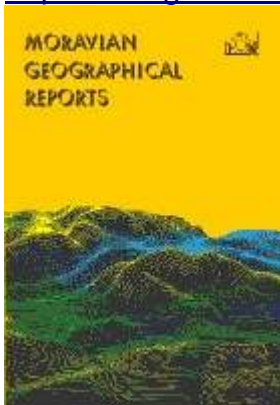
AUC Geographica (Scopus)

<http://web.natur.cuni.cz/gis/aucg/>



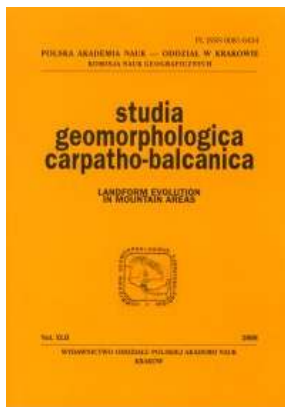
Moravian Geographical Reports (Scopus)

<http://www.geonika.cz/EN/research/ENMgr.html>

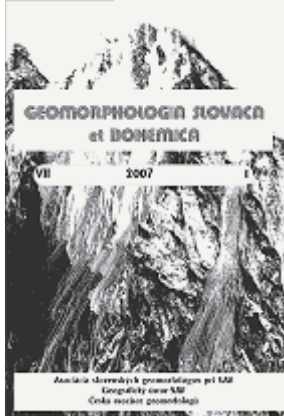


Studia Geomorphologica Carpatho-Balcanica

http://www.igipz.pan.pl/wydaw/studia_geomorphologica/



Geomorphologia Slovaca et Bohemica
<http://www.asq.sav.sk/gfsb/home/index.php>



Session 4 – Anthropogenic geomorphology (HILS Session) - for publication details, please contact Prof. D. Lóczy.

Access

The Conference venue is the Sepetna Hotel, which is located in Ostravice village (see maps).

By air:

The nearest airport (Leos Janacek Ostrava Airport) is located 40 km (30 minutes by car/taxi) far from Ostravice. There are direct flights from/to Prague and Vienna.

By train:

Ostravice has train connection to Ostrava (approx. 1 hour, 50 CZK). Ostrava is connected with other cities in the Czech Republic and with the neighbouring countries by IC/EC/SC/fast trains.

By bus:

There are direct buses from Ostrava (approx. 1 hour, 50 CZK) and Frydlant nad Ostravici (approx. 10 min, 18 CZK) to Ostravice village.

By car:

If travelling from Prague or Brno, use D1 highway and than road E462 and road 56.

If travelling from Poland, use road E462 and than road 56.

If travelling from Slovakia, use road E442/18 and road 56.

Car parking within the hotel complex is allowed free of charge. On the first day of the registration, a conference tax will be provided from the Ostravice railway station to the conference venue (free of charge).

By taxi:

Taxi service is provided by local companies from Frydlant nad Ostravici (railway station) (12 km), Ostrava (40 km) and Ostrava Airport (40 km).

On foot:

The conference venue is located 2 km far from the Ostravice bus station or railway station. The Sepetna Hotel is easily accessible on foot.



For detailed information regarding transport in the Czech Republic visit this website:
<http://jizdnirady.idnes.cz/vlakyautobusymhdvse/spojeni/>



If you need any help, please contact us!

Payment instructions

Registration fee

Payment on the spot is possible in Czech crowns (CZK) only! Ostravice is a village and therefore money change is limited. The nearest money change is located in Frydlant nad Ostravici (exchange office, ATM) approx. 10 km far from the conference venue.

Accommodation

The accommodation shall be paid at the Hotel reception desk in registration time and Czech currency is accepted only. Credit cards, debit cards are accepted accepted too (VISA, VISA Electron, MASTER CARD, Maestro).

The participants can choose from the following options*:

Option A)

Accommodation with meal 17 – 19 October 2011:

Single room 2.500 CZK (~€100*) per person

Double room 2.000 CZK (~€80*) per person

Bungalows 1.500 CZK (~€60*) per person (in case of full bungalow capacity – 4 persons)

Option B)

Accommodation with meal 17 – 20 October 2011:

Single room 3.600 CZK (~€145*) per person

Double room 3.000 CZK (~€120*) per person

Bungalows 2.300 CZK (~€92*) per person (in case of full bungalow capacity – 4 persons)

Prices of accommodation and catering – individual registration (per day/for 1 person)

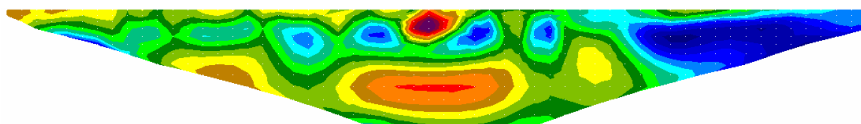
Single bed 990 CZK (~40 EUR*) (bed & breakfast)

Double bed 750 CZK (~30 EUR*) (bed & breakfast)

Lunch 150 CZK (~6 EUR*) (soup & main dish)

Dinner 190 CZK (~7.50 EUR*)

* Prices in euros depend on actual exchange rate



SEE YOU IN THE BESKYDY MOUNTAINS!