



Sandstone Landscapes III

Second Circular



Stolowe Mountains National Park

Kudowa Zdrój, Poland

25–28 April 2012

Organized by

University of Wrocław, Poland

University of Environmental and Life Sciences, Wrocław, Poland

Stolowe Mountains National Park

The Association of Polish Geomorphologists

Sandstone Landscapes III



Thank you for your interest in sandstone research and submission of preliminary registration form. Now we distribute the Second Circular, which repeats important information from the First Circular, contains guidelines of abstract preparation and details of conference fees. We ask all prospective participants to fill in and submit the registration form that will now include the definitive title of your presentation, along with your abstract.

Aims and context of the conference

Sandstone landscapes are widely renowned and support some of the most spectacular sceneries that exist on Earth. Obvious examples include tablelands of the Colorado Plateau in the southwest United States, desert inselbergs around Wadi Rum and the rock-hewn city of Petra in Jordan, the breathtaking Danxia landscapes of southern China, or the sandstone towers of the Bungle Bungle and plateau of the Blue Mountains in Australia. Among these sandstone landscapes the central European plateaux, rock cities, escarpments and canyons occupy a special position. Not only are they scenically beautiful and scientifically intriguing, but they can be regarded as one of the cradles of sandstone research worldwide. In particular, the concept of 'Sandstone Phenomenon', which integrates rocks, landscapes, vegetation patterns, animal habitats, and human use of natural resources, has been developed here. This implies that proper understanding of sandstone geo-ecosystems and their behaviour under human impact must be based on interdisciplinary research, equal consideration of different components, and the exploration of linkages between these components.

The Sandstone Phenomenon was the focus of two successful Sandstone Landscapes conferences held in Doubice (Czech Republic) in 2002 and Luxembourg in 2005. To continue this tradition, we now cordially invite all people interested in research on sandstone geo- and ecosystems, or involved in the management of protected sandstone areas, to participate in the **Sandstone Landscapes III** conference. This will be in April 2012 at Kudowa Zdrój in south-west Poland, near the Stołowe Mountains National Park. This conference is intended to provide a forum to communicate results of research on various aspects of sandstone landscapes from many different parts of the world. There will be a particular focus on linkages between different components of natural systems and sustainable management of sandstone areas, many of which are protected for their scenic, earth science, biological or cultural reasons. Field sessions will also give conference participants the opportunity to visit one of the most spectacular sandstone areas in central Europe, including the famous table hill of Szczeliniec Wielki, visited by Johann Wolfgang Goethe in 1790. Finally, we hope that the participation and interaction of sandstone researchers from various specialized fields will strengthen cross-disciplinary cooperation and enhance the global understanding of Sandstone Phenomenon.

Piotr Migoń

*Department of Geography
and Regional Development
University of Wrocław*



Uniwersytet
Wrocławski

Cezary Kabała

*Department of Soil Science
of Environmental Protection
University of Environmental
and Life Sciences, Wrocław*



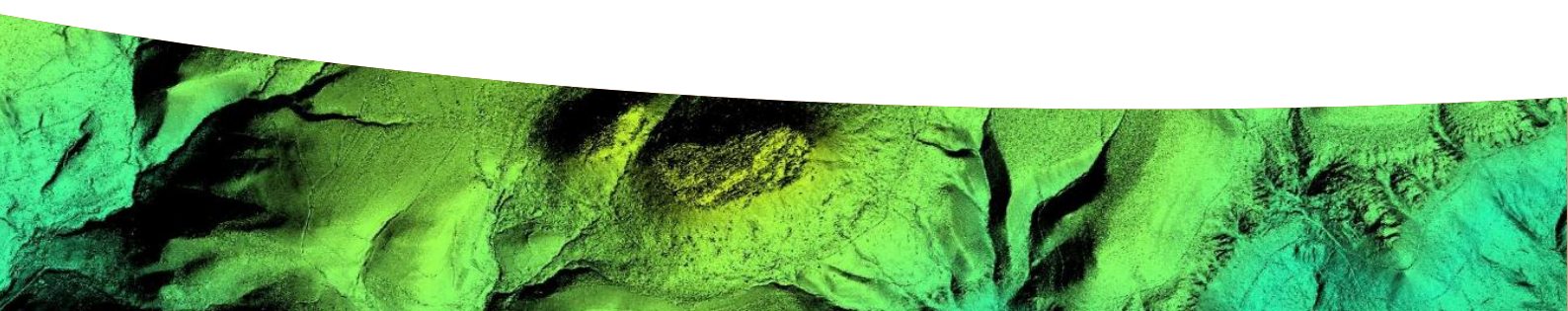
Janusz Korybo

*Director of Stołowe
Mountains
National Park*



Zbigniew Zwoliński

*The Association of Polish
Geomorphologists*



Venue and access

The conference will be held in Kudowa Zdrój, a picturesque spa resort at the foot of the sandstone Stołowe Mountains near the Polish/Czech boundary. Kudowa is the headquarters of the Stołowe Mountains National Park, established in 1993 for the protection of unique sandstone rock formations, rare rocky plant communities and peat bogs. The Park is located nearby and key localities within its limits will be visited during the field sessions accompanying the conference.

Kudowa Zdrój is a border town located in the Sudetes Mountains, on the main international road connecting Prague in the Czech Republic and Wrocław in Poland, approximately halfway (c. 150 km) from either city. Both Wrocław and Prague have international airports, served by traditional and low cost carriers. From Wrocław you can get to Kudowa by bus which takes about 2.5 hours. From Prague you have to get to the border town of Nachod, which can be done either by train or bus, and cross the border to reach Kudowa. Minibuses serve Nachod – Kudowa connection. Driving times are approximately two hours from Wrocław and two hours from Prague using a toll motorway.

Preliminary programme

Day 1 – paper and poster sessions in Kudowa Zdrój (full day).

Day 2 – full day field session in the Stołowe Mountains, focused on geology, geomorphology and vegetation patterns of a sandstone plateau and sandstone escarpments. During this trip the main highlights of the region, such as the mesa of Szczeliniec Wielki, large-scale landslides, sapping cirques, and sandstone residual rocks will be visited and specific vegetation patterns associated with them, including priority habitats of *Natura 2000* network, will be presented. Issues of human impact and management of tourism in protected areas will be also addressed.

Day 3 – paper and poster session in Kudowa Zdrój (full day).

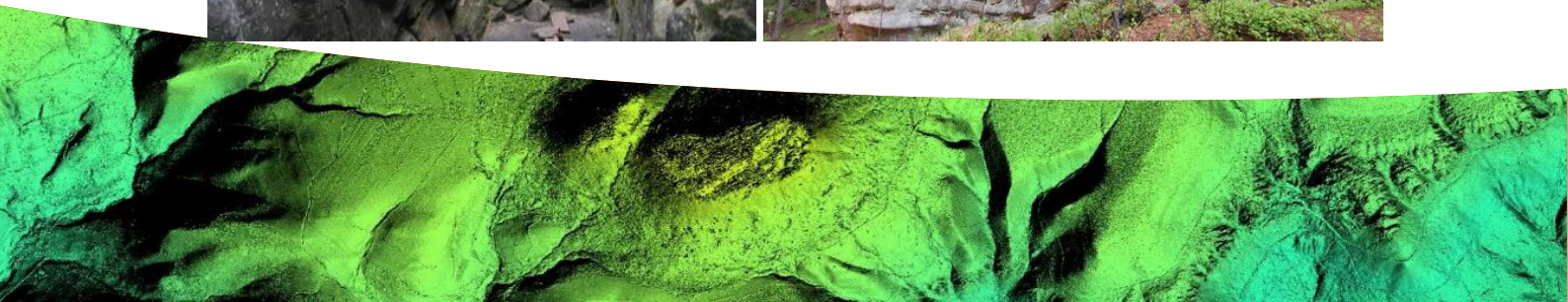
Day 4 – half-day field session in the Stołowe Mountains, focused on patterns of sandstone scarp retreat, meadow and forest communities on slopes of different inclination, and the role of active management in the protected area.

An optional extension of field trip to the Czech Republic is planned, to see the famous sandstone rock cities of Teplice and Adršpach (1½ days – from Saturday 28 to Sunday 29 April).

The gorge of Piekietko



Moss-covered sandstone tors



Call for papers

Scientific studies, both oral and poster presentations, related to any aspect of research in sandstone terrains, from geology to human impact and resource management, are welcome. Those addressing themes which emphasize relationships and linkages between different natural components or between nature and humans are particularly welcome. In this way, we wish to adhere to the concept of Sandstone Phenomenon and follow the holistic approach to the studies and management of sandstone areas.

To ensure the most effective dissemination of research, and to foster interdisciplinary collaboration, we have decided not to run parallel sessions on highly specialized subjects, but rather to have just one session. This likely implies the need to select contributions for oral presentations, approximately 30 for the whole conference. The conference scientific committee will allocate submitted presentations to either oral or poster sessions. Therefore, participants are asked to please indicate your preferred means of presenting, but the scientific committee reserves the right to change the format of presentations. Please bear in mind that oral presentations addressing broader, interdisciplinary, transdisciplinary or review-like studies will be preferred. However, by no means do we want to downgrade posters as means of communication in science. Posters allow readers to reflect on their content for longer, and allow authors to fruitfully discuss their findings at the poster. They are particularly effective if large data sets are to be presented. Therefore, we plan to give ample time to poster sessions and ensure their maximal visibility throughout the length of the conference.

Abstract Submission

The abstract, written in Standard English, should contain the aim of the research, the main findings of the research project and a brief conclusion. Abstracts must not exceed 2 pages including references, tables and illustrations. They should be typed in single space. The used font must be the Times New Roman Size: 14pt and bold for title and centralized for the title, and 12pt for the text, footnotes and legends. Maximum six keywords in alphabetical order, and separated by commas, should be put before the main body of the abstract.

1–2 figures (black&white) may be included into the abstract and count to its total length. They have to be referred to in the text. Figures have to be supplied as separate files, saved in JPG format, minimum 300 dpi.

Citation style:

Journals

Linton D.L., 1955. The problem of tors. *Geographical Journal* 121, 470–487.

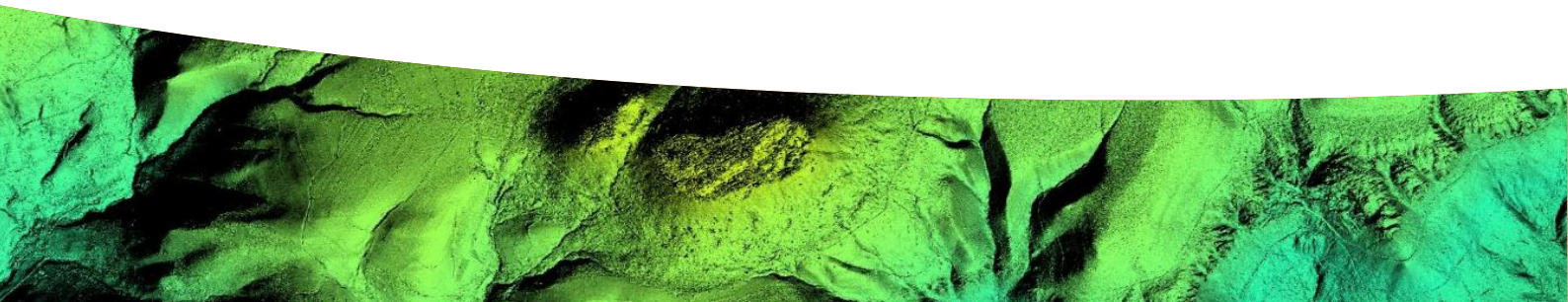
Books

Young R., Young A., 1992. *Sandstone Landforms*. Springer, Berlin – Heidelberg.

Book chapter

Robinson D.A., 2007. Pennine Gritstone. In: H. Härtel, V. Cílek, T. Herben, A. Jackson, R. Williams (eds), *Sandstone Landscapes*. Academia, Praha, 388–390.

Citations in the text should be made by mentioning author(s) and year, for example: (Young, Young 1992).



Conference fee

Conference fee by payment date	Regular	Student (proof of status required)
Early Bird rate (30 Nov 2011)	300 EUR	250 EUR
Standard (29 Feb 2012)	400 EUR	300 EUR

Conference fee includes: 4 nights accommodation in double rooms (24 to 28 April), all meals from dinner on 24 April to lunch 28 April and refreshments during paper sessions, excursions on 26 April (full day) and 28 April (half day), and conference materials.

Conference fee does not include transportation to/from the conference venue and optional post-conference field trip.

Payment details

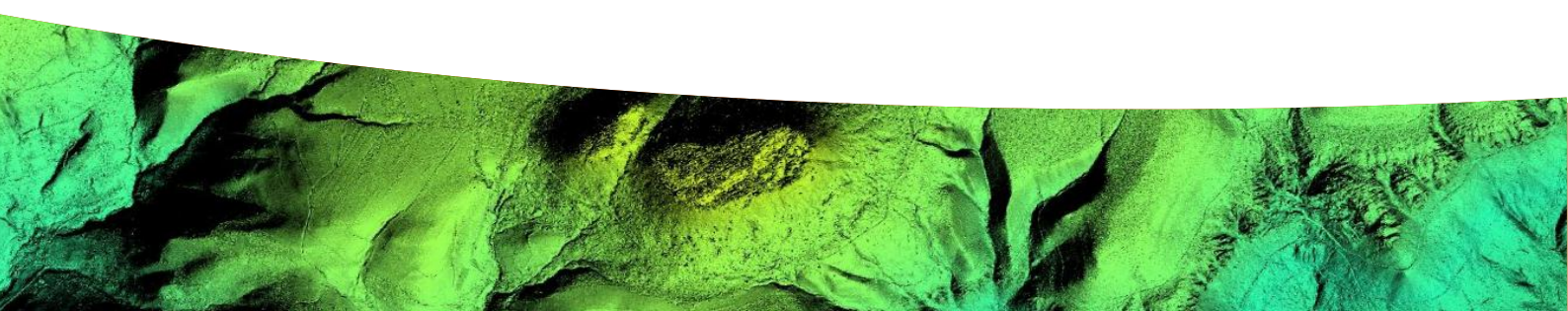
Please pay your conference fee to the bank account of The Association of Polish Geomorphologists

The Association of Polish Geomorphologists
Dziegielowa 27, 61-680 Poznan, Poland

WBKPPLPP PL 65 1090 1359 0000 0000 3501 8623

Important dates

- 30 November 2011 – abstract submission and deadline for registration at an early bird rate
- 31 January 2012 – abstract acceptance and qualification of presentations to oral or poster sessions
- February 2012 – distribution of 3rd circular, including detailed programme of the conference
- 29 February 2012 – deadline for registration at standard rate
- 24-28 April 2012 – Sandstone Landscapes III conference



Definitive Registration form

Name, title:

.....

Institution:

.....

Address:

.....

.....

Research subject:

.....

Title of presentation:

.....

.....

Preferred presentation (please mark as appropriate):

Oral Poster

Interest in field trip extension in the Czech Republic (please mark as appropriate):

Yes No

Address for correspondence:

.....

.....

.....

.....

E-mail:

.....

Please fill the registration form and send it by e-mail or by fax to the following address:

Piotr Migoń
Department of Geography and Regional Development
University of Wrocław
Pl. Uniwersytecki 1
50-137 Wrocław, Poland
Tel. 48 71 3752 295 or 48 71 3752 244
Fax 48 71 34 35 184
E-mail: piotr.migon@uni.wroc.pl

to fill preliminary registration form please
use Acrobat Reader X (free download)
<http://get.adobe.com/reader/>